

Cyclamen

collection

PROFUMATI



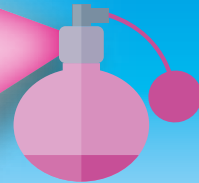
MAXI



MIDI



MINI



GREEN PROFIT

Alta produttività



SPECIALTIES

Ideali per regalo

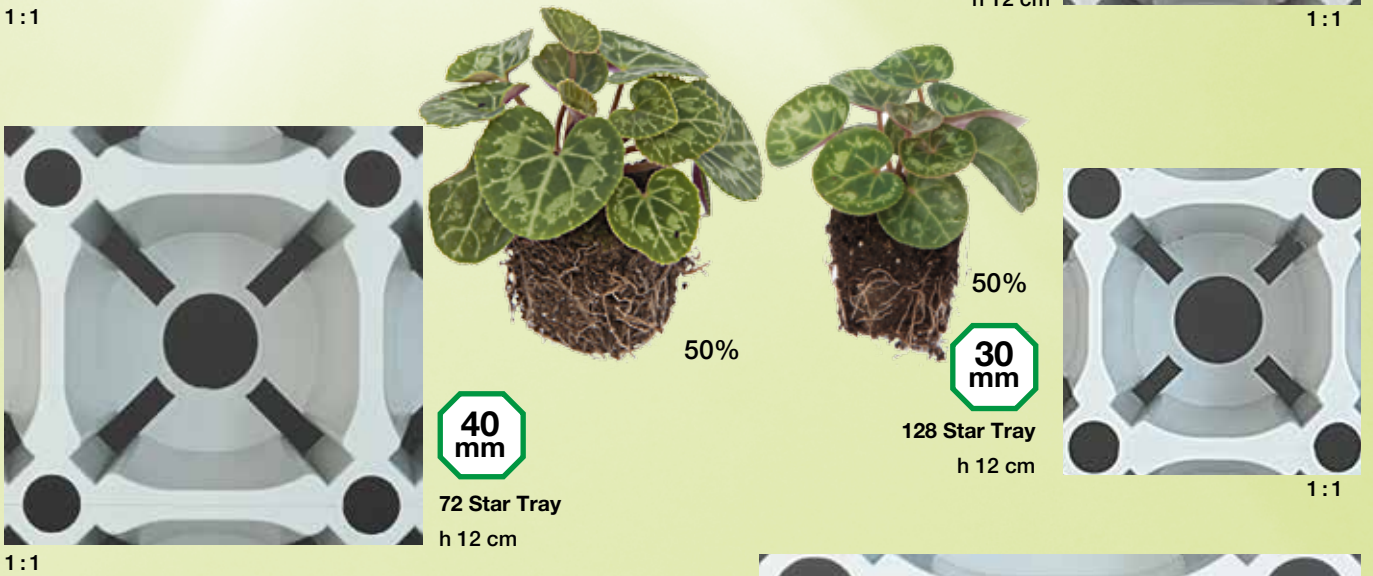


PLEIN AIR

I più resistenti in aiuola



			
180 - h 12 cm	25 mm	68 Trays	168 Trays - h 245 cm
128 - h 12 cm	30 mm	68 Trays	168 Trays - h 245 cm
128 (64 x 2) - h 12 cm	30 mm	68 Trays	168 Trays - h 245 cm
72 - h 12 cm	40 mm	68 Trays	168 Trays - h 245 cm
32 - h 17 cm	60 mm	48 Trays	112 Trays - h 245 cm
286 Styrofoam		56 Trays	



Le foto delle varietà Morel sono su gentile concessione di © Morel Cyclamen Photo: Emmanuel Ulzega

Anche Also 

FIORITURA/FLOWERING TIME * Almeno con 3 fiori aperti / At least 3 open flowers

Varietà/Variety	Star tray		CLIMA CALDO / WARM CLIMATE			CLIMA FRESCO / COOL CLIMATE					
			TEMPO COLTIVAZIONE GROWING SPACE settimane/weeks	ESTATE	AUTUNNO	INVERNO	TEMPO COLTIVAZIONE GROWING SPACE settimane/weeks	SUMMER	AUTUMN	WINTER	
Flori Maxi	S.S. Mammoth	72*	14/17	20-22				15-17			
	Rainier	72*	13/16	18-20				16-17			
	Magnia	72*	14/17	18-20				16-18			
	Winter Ice	72*	13/16	18-20				16-17			
	Halios®	72*	14/17	18-21				16-19			
	Halios® CURLY®	72*	14/17	21-24				19-22			
	Halios® HD	72*	12/14 (17)	18-21				16-1916-1916-19			
	Latina®	72*	10,5/14	14-17				12-14			
	Latina® FANTASIA®	72*	10,5/14	16-19				14-16			
	Sierra SynchroSierra	72*	13/14	16-18				14-15			
	Contiga (Maxora)	72*	13/14	16-19				14-16			
	S.S. XL	72*	12/13	18-20				13-15			
Flori Midi	Friller	72*	12/14	20-22				18-19			
	Premium	72*	10,5/14	13-16				11-13			
	Premium ABANICO	72*	12/14	16-19				14-16			
	Rocolina	72*	12/15	17-20				15-17			
	Tianis®	72*	10,5/12	13-16				11-13			
	Tianis® FANTASIA®	72*	10,5/12	16-19				14-16			
	Laser Synchro	72*	11/12	13-15				11-12			
	S.S. Original	72*	13/16	17-21				13-16			
	S.S. Allure	72*	11/13	16-19				13-15			
Flori Mini	S.S. Macro	72*	12/15	16-18				13-16			
	Metis®	128 (64 x 2)**	9/12	15-17				13-14			
	Metis® FANTASIA®	128 (64 x 2)**	10/12	17-20				15-17			
	Metis® PomPom®	128 (64 x 2)**	9/12	18-21				16-18			
	S.S. Jive	128 (64 x 2)**	9/12	18-21				13-14			
	S.S. Compact	128 (64 x 2)**	9/11	19-21				13-14			
	S.S. Da Vinci	128 (64 x 2)**	9/11	19-21				14-15			
	S.S. Mini Winter	128 (64 x 2)**	10/12	15-19				11-15			
	S.S. Picasso	128 (64 x 2)**	10/12	17-20				12-16			
	S.S. Verano	128 (64 x 2)**	9/11	12-15				11-12			
	S.S. Carino	128 (64 x 2)**	9/12	14-18				12-13			
	Midori Synchro	128 (64 x 2)**	8/10	12-14				10-11			
	See-Why	128 (64 x 2)**	8/10	12-14				10-11			
	Snowridge Mini	128 (64 x 2)**	8/10	12-14				10-11			
	Smartiz	128 (64 x 2)**	6/10,5	14-16				12-13			
	Piccola	128 (64 x 2)**	6/9	12-15				10-12			
Goblet	128 (64 x 2)**	9/11	12-15				10-12				

* Star Tray 128: considerare circa 1-2 settimane in più / please consider about 1-2 weeks more
 Star Tray 32: considerare circa 3-4 settimane in meno / please consider about 3-4 weeks less
 ** Star Tray 180: considerare circa 1-2 settimane in più / please consider about 1-2 weeks more

Gli elementi descrittivi di tutte le varietà presenti su questa tabella sono dati a titolo indicativo. Numeri e caratteristiche possono pertanto variare in funzione delle condizioni e dei sistemi di coltivazione.

Descriptive details quoted here are intended as a general guideline. Numbers and details might therefore vary in accordance with the growing systems and conditions.



- RAINIER**
- MAXORA**
- HALIOS**
- S.S MAMMOTH**

Foto Settimana/week 40

Trapianto s.19 da Star Tray 32 Duetto
 Transplant w.19 from Star Tray 32 Duetto

HALIOS ROUGE ECARLATE



Larghezza pianta >50cm

Cyclamen **MAXI** Rossi / Reds

ESTATE

**SIERRA**

Adatta per climi più caldi
Suitable for warmer climates
 Geeignet für wärmere Klimazonen

00 89 21 **SCARLET SOUTH****SIERRA**

Universale
Universal
 Universell einsetzbar

00 89 13 **SIERRA SCARLET****CONTIGA**

Rosso luminoso, steli robusti
Bright red, strong stems
 Leuchtend rote, kräftige Stiele

00 89 27 **RED****LATINIA SUCCESS**

Rosso intenso
Deep red
 Tiefrot

00 90 02 **ROUGE VIF****RAINIER**

Piante di pregio
Premium quality
 Premium Qualitätspflanzen

00 89 46 **SCARLET****LATINIA**

Compatto
Compact
 Kompakt

00 90 04 **ROUGE ECARLATE****S.S. MAMMOTH**

Pianta voluminosa
Large plant
 Üppige Pflanze

00 89 38 **RED IMP****HALIOS HD**

Compatto per alta densità
Compact plants for high density production
 Kompakte Pflanzen für hohe Flächenbelegung

00 88 04 **ECARLATE VIF**

AUTUNNO

**HALIOS**

Per fine estate - inizio autunno
For late summer - early autumn
 Für Spätsommer - Frühherbst

00 88 03 **ECARLATE VIF****HALIOS**

Per autunno - inverno
For autumn - winter
 Für Herbst - Winter

00 89 02 **ROUGE ECARLATE****MAGNIA**

Pianta robusta, fiori grandi
Robust plant, large flowers
 Kräftige Pflanze, große Blüten

00 94 25 **RED****S.S. XL**

Compatto, foglie piccole
Compact, small leaves
 Kompakt, kleine Blätter

00 89 62 **RED**

PRECOCI 1

2

3

MEDIO PRECOCI

TARDIVI 4

TARDIVI

Cyclamen **MAXI** Bianchi / White



SIERRA



Compatto e precoce
Compact, early
Kompakt, früh

00 89 20 **WHITE**



LATINIA SUCCESS

Bianco puro
Pure white
Rein Weiß

00 90 17 **BLANC PUR**



PRECOCI



CONTIGA

SUMMER

Steli robusti
Strong stems
Kräftige Stiele

00 89 28 **WHITE**



LATINIA

Miglior contrasto con le foglie
Strong contrast with the leaves
Starker Kontrast zu den Blättern

00 90 13 **BLANC**



RAINIER

Adatta per climi più caldi
Suitable for warmer climates
Geeignet für wärmere Klimazonen

00 89 55 **WHITE SOUTH**



MAGNIA

Pianta robusta, fiori grandi
Robust plant, large flowers
Kräftige Pflanze, große Blüten

00 94 30 **WHITE**



HALIOS HD

Bianco più puro
Purest white
Reinstes Weiß

00 88 16 **BLANC PUR**



HALIOS HD

Fiore più duraturo
Long-lasting flowers
Lang haltbare Blüte

00 88 26 **BLANC**

MEDIO PRECOCI



HALIOS

Bianco di qualità
Premium white
Premium-Weiß

00 88 17 **BLANC PUR**

AUTUMN



S.S. XL

Compatto, foglie piccole
Compact, small leaves
Kompakt, kleine Blätter

00 89 69 **PURE WHITE**



S.S. MAMMOTH

Pianta voluminosa
Large plant
Üppige Pflanze

00 89 39 **CREAM WHITE**



TARDIVI



Alta produttività a mq
Facile programmabilità,
bassa manutenzione
Varietà compatte dalla fioritura
contemporanea. Fiori grandi

High productivity per sq. m
Easy scheduling, low maintenance
Compact varieties with simultaneous
flowering. Large flowers

Hohe Produktivität pro Quadratmeter
 Leicht Programmierbar, wenig Pflege
 Kompakt wachsende Sorten
 mit gleichzeitiger Blüte. Großblumig

HALIOS HD

Qualità anche ad alta densità
Fioritura più precoce di Halios

Quality even at high density
Flowers earlier than Halios

Gute Qualität auch bei dichter
 Flächenbelegung
 Frühere Blüte als Halios



00 88 04 **ECARLATE VIF**



00 88 51
FLAMMÉ MELANGE



00 88 06 **SAUMON**



00 88 10 **FUCHSIA CLAIR**



00 88 14
VIOLET CATTLEYA



00 88 16
BLANC PUR

00 88 24
FUCHSIA NEON



00 88 25
MAGENTA FONCE'



00 88 73
DHIVA VIOLET FONCE'

00 88 92
VICTORIA 50



LATINIA SUCCESS

Compatto, precoce,
uniforme

Compact, early,
uniform

Kompakt, frühblühend,
 gleichmäßiger Wuchs



00 90 02 **ROUGE VIF**



00 90 16
MAGENTA FONCE'



00 90 17
BLANC PUR



00 90 14 **SAUMON**



00 90 15 **FUCHSIA**



00 90 08 **VIOLET**



00 89 10 **PURPLE FLAME**



00 89 13 **SCARLET**

SIERRA SYNCHRO

Fioritura sincronizzata. Precoce

Simultaneous flowering. Early

Gleichzeitige Blüte. Frühblühend



00 89 14 **WINE FLAME**



00 89 15 **DEEP SALMON**



00 89 16 **LIGHT PINK W.EYE**



00 89 17 **ROSE**



00 89 21 **SCARLET SOUTH**



00 89 18 **DEEP ROSE**



00 89 19 **PURPLE**



00 89 20 **WHITE**

S.S. VERANO

Precoce e compatto

Early and compact

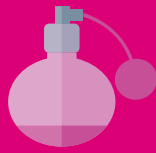
Frühblühend und kompakt



MINI



Profumati



MAXI



00 89 53 PURPLE



00 89 52 LIGHT PURPLE

RAINIER



00 88 92 VICTORIA 50


Victoria
HALIOS
SIERRA
SYNCHRO

00 89 16 LIGHT PINK WITH EYE

Il profumo

Il profumo deriva dagli oli essenziali che si sviluppano nei fiori quando sono maturi o dotati di polline. I fiori ancora giovani o troppo vecchi invece non profumano.

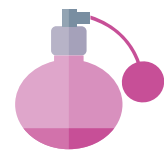
The scent comes from the essential oils which develop in the flowers, when these are mature or bearing pollen. However, very young or old flowers have no scent.

Der Duft der Blüten entsteht durch ätherische Öle, die sich während des Reifeprozesses der Blüte bilden oder solange diese Blütenpollen tragen. Junge oder sehr reife Blüten duften hingegen nicht.

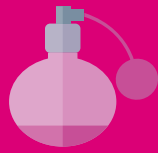


00 90 37 SAUMON FLAMMÉ

PREMIUM



Profumati



MINI



00 91 28
SYNCHRO PURPLE



00 91 29
SYNCHRO WHITE



00 91 24
SYNCHRO SALMON

MIDORI



00 91 25 FLAME SHADES ROSE

METIS



00 91 80 MIX EVOLUTION

MIDI



00 90 68
SYNCHRO SALMON



00 90 73
SYNCHRO WHITE



00 90 82
SYNCHRO ROSE FLAME



00 90 70
SYNCHRO PINK FLAME



00 90 69
SYNCHRO PINK



00 90 81
ROSE



00 90 72
SYNCHRO FLAME PURPLE

Il profumo

La pianta emana un profumo intenso nelle giornate di sole, durante le ore fresche del mattino o se ha molti fiori maturi. Può verificarsi che i fiori di un 10-20% delle piante di una di queste varietà non emanino profumo

The plant gives off an intense scent on sunny days, during the cool hours of the morning or if it carries many mature flowers. The possibility exists of 10-20% of scented variety plants not giving off any scent

Die Pflanze verströmt einen besonders intensiven Duft an sonnigen Tagen, in den kühlen Morgenstunden oder wenn sie mit zahlreichen reifen Blüten besetzt ist. Es besteht die Möglichkeit, dass 10-20% des Pflanzenbestandes von Sorten, die normalerweise duften keinen Duft abgeben

PLEIN AIR collection

Serie e colori selezionati per una miglior resistenza dei fiori a pioggia e freddo
Ideali per aiuole, mantengono un bell'aspetto anche in condizioni invernali
Resistono bene su balconi e in ambienti esterni con temperature vicine allo zero

*Series and colours selected for greater resistance of the flowers to rain and cold
Ideal for bedding, still look good even in winter conditions*

Great for balconies and other outdoor positions, can withstand temperatures close to zero

Ausgewähltes Farbspektrum mit einer höhere Widerstandsfähigkeit der Blüten gegen Regen und Kälte

Ideal für die Beetbepflanzung, da die Pflanzen auch bei winterlichen Bedingungen attraktiv aussehen
Ausgezeichnet geeignet für die Bepflanzung von Balkonen und anderen Standorten im Freien, da sie Temperaturen bis knapp über null Grad vertragen

MIDI

 **Tianis**



00 90 46 **ROUGE VIF**
00 90 47 **SAUMON À OEIL**
00 90 49 **FUCHSIA**
00 90 87 **FUCHSIA VIF**
00 90 50 **BLANC EVOLUTION**
00 90 60 **VIOLET FONCE'**
00 90 63 **ROUGE ECARLATE**
00 90 64 **MAGENTA FONCE'**

 **Tianis**



Fantasia

00 90 52 **MELANGE**
00 90 53 **ROUGE ECARLATE**
00 90 54 **FUCHSIA VIF**
00 90 55 **VIOLET**
00 90 56 **VIOLET FONCE'**
00 90 57 **MAGENTA FONCE'**
00 90 58 **FUCHSIA**

 **Premium**



00 90 38 **SAUMON À OEIL**
00 90 41 **ROUGE VIF**

 **Latinia**

00 90 02 **ROUGE VIF SUCCESS**
00 90 04 **ECARLATE ROUGE**
00 90 16 **MAGENTA FONCE' SUCCESS**

MINI

 **metis**



00 91 50 **VIOLET FONCE' EVOL.**
00 91 55 **ECARLATE COMPACT**
00 91 58 **ROSE CLAIR À OEIL**
00 91 60 **FUCHSIA & FUCHSIA VIF**
00 91 61 **ROUGE VIF COMPACT**



Fantasia

00 91 76 **ROUGE & FUCHSIA VIF**
00 91 77 **VIOLET FONCE'**
00 91 78 **MAGENTA FONCE'**
00 91 79 **SAUMON ECARLATE**



Decora

00 91 48 **ROUGE ECARLATE**
00 91 68 **FUCHSIA VIF**
00 91 69 **BLANC PUR**
00 91 70 **SAUMON**
00 91 71 **VIOLET**
00 91 73 **MELANGE**



Victoria

00 91 80 **VICTORIA DECO MIX EVOLUTION**

MIDORI Synchro



00 91 22 **BRIGHT SCARLET**
00 91 28 **PURPLE**
00 91 31 **PURPLE FLAME**
00 91 32 **WINE FLAME**

PICASSO



00 92 95 **MIX**

VERANO



00 92 02 **RED SOLAR**
00 92 04 **SALMON RED**
00 92 11 **VIOLET LIGHT**
00 92 13 **DEEP DARK VIOLET**
00 92 15 **DEEP WINE RED**
00 92 16 **WINE RED FLAMED**
00 92 43 **DEEP NEON FLAMED SOLAR**

GOBLET

00 91 15 **SHINE WINE RED**



Specialità **MAXI** Specialties



286	12-37
128	16-45
72	13-39
32	18-30



00 88 89 **MIX**



Summer



Winter



HALIOS BLUSH

**Colora progressivamente
col freddo**

*Colour intensifies
gradually with the cold*

Farbe wird mit zunehmender
Kälte intensiver



00 88 87 **INTENSE**



00 88 80 **MAGENTA**



FUNFLAME

Colore sorprendente

Striking colour

Bemerkenswerte Farbe



00 90 27 **MAGENTA**



HALIOS DHIVA

**Grandi fiori,
petali arrotondati
per un effetto unico**

*Large flowers, petals
rounded for a unique
effect*

Großblumig, abgerundete
Blütenblätter sorgen für
einen einzigartigen Effekt



00 88 70 **SAUMON HD**



00 88 72 **VIOLET HD**



00 88 73 **VIOLET FONCE' HD**



00 88 74 **BLANC PUR**



00 88 71 **ROSE Á OEIL HD**

Specialità **MAXI** Specialties



286	12-37
128	16-45
72	13-39
32	18-30



00 88 54 **MELANGE FLAMMÈ**



00 88 55 **ROUGE**



HALIOS DECORA

**Pianta decorativa,
rotonda e resistente**

*Rounded, sturdy plant,
decorative*

Dekorative Pflanze,
runder Aufbau,
widerstandsfähig

286	12-37
128	16-45
72	13-39

00 88 93
ROSE



HALIOS FALBALA

**Raffinato, profumato,
compatto e precoce**

*Elegant, scented,
compact and early*

Eleganter Wuchs, duftend,
kompakt und frühblühend



00 88 96 **SCARLET**

00 88 95 **MIX**

WINTER ICE

Per le feste natalizie

For Christmas time

Ideal für die
Weihnachtszeit



Specialità **MIDI**

Specialties



00 90 34 **MIX**

**PREMIUM
ABANICO**

**Bouquet di eleganti
fiori a ventaglio
Precoce**

*Bouquet of elegant
flowers shaped like a fan
Early*

Ein Strauß fächerartig
aufgebauter Blüten
Frühblühend



286	12-37
128	16-45
72	13-39



ROCOLINA

**Fiori frangiati, eleganti
e abbondanti
Pianta vigorosa**

*Fringed flowers, elegant
and free-flowering
Vigorous plant*

Gefranste Blüten, elegant
und sehr blühwillig
Kräftige Pflanze



128	16-45

00 90 89 **MIX**



SOLO MIX / ONLY MIX



S.S. ORIGINAL

**Chioma midi, fiori mini,
copiosa fioritura**

*Medium-sized habit, miniature
flowers, very floriferous*

Mittelgroßer Pflanzenaufbau,
Blüten im Miniaturformat,
reichblühend



**SOLO MIX
ONLY MIX**



00 90 99
MISCUGLIO

S.S. MACRO

**Chioma grande,
adatto per coltivazioni
invernali**

*Large plant habit,
suitable for winter
production*

Üppige Pflanze, ideal
für die Kultur während
der Wintermonate



00 90 93 **MIX**

Specialità **MINI** Specialties



286	12-37
180	16-39
64	13-40




**METIS
POM POM**

**Compatto,
frangitura di qualità**

*Compact,
lovely fringing*

**Kompakt,
sehr hübsch
gefranste Blüten**




00 91 90 **BLANC**



00 91 89 **MELANGE**



S.S. JIVE

Vigoroso con steli centrali

Vigorous with central stems

**Kräftig, mittig
angeordnete Blüten**




00 92 75 **MIX**



00 92 74
FLAMED MIX



Specialità **MINI** Specialties



00 91 12
**PICOLA
SHINE RED**

PICOLA SHINE RED

**Speciale, per
composizioni natalizie**

*Special, for Christmas
arrangements*

Perfekt für
Weihnachtsarrangements

SMARTIZ VICTORIA

Il Mini da regalo

*Mini, especially
suitable for gifts*



Mini - Ideal als Geschenk



00 93 20
**SMARTIZ
VICTORIA**

286	12-37
180	16-39
64	13-40



00 91 15 **SHINE WINE RED**

GOBLET

**Fiore particolare,
resistente al freddo**

*Remarkable flower,
tolerates cold*

Bemerkenswerte Blüten,
widerstandsfähig gegen Kälte



MAXI



MAMMOTH



RAINIER



MAGNIA



HALIOS



SIERRA

00 89 37 MIX

286	12-37
128	16-45
72	13-39
32	18-30

S.S. MAMMOTH

Pianta voluminosa senza bisogno di togliere fiori. Tardivo

Large plant, no need to remove flowers. Late

Üppige Pflanze, Blumen zupfen ist nicht nötig. Späte Serie




00 89 36 RED IMP



00 89 39 CREAM WHITE



00 89 40 LIGHT SALMON PINK IMP



00 89 41 NEON PINK



00 89 42 DARK VIOLET



00 89 43 WINE RED



00 89 44 FLAMED MIX IMP



RAINIER

Piante grandi, fioritura precoce anche in inverno

Large plants, early flowering, even in winter

Große Pflanzen, frühe Blüte auch im Winter



00 89 55 WHITE SOUTH

00 89 45 MIX



00 89 46 SCARLET



00 89 47 DEEP SALMON



00 89 48 DEEP ROSE



00 89 49 LIGHT PINK W.EYE



00 89 50 LILAC



00 89 51 PINK



00 89 52 LIGHT PURPLE



00 89 53 PURPLE



00 89 54 PURPLE FLAME



00 89 57 WINE FLAME



HALIOS HD



CONTIGA



XL



LATINIA

MAXI



EXTRAORDINARY COLOUR

00 94 29 **DEEP ROSE LIGHT EDGE**



00 94 26 **PURPLE**



00 94 27 **SALMON EYE**



0094 28 **LIGHT PINK EYE**

286	12-37
128	16-45
72	13-39
32	18-30



MAGNIA

Pianta robusta con steli forti - Fiori molto grandi

Robust plant with strong stems - Very large flowers

Robuste Pflanze mit kräftigen Stielen
Sehr große Blüte



00 94 30 **WHITE**



00 94 25 **RED**



MAXI



286	12-37
128	16-45
72	13-39
32	18-30



00 89 21 **SOUTH SCARLET**



SIERRA SYNCHRO

**Fioritura sincronizzata
Precoce**

*Simultaneous flowering
Early*

Gleichzeitige Blüte
Frühblühend



00 89 00 **SYNCHRO MIX**

00 89 10 **PURPLE FLAME**



00 89 13 **SCARLET**



00 89 14 **WINE FLAME**



00 89 15 **DEEP SALMON**



00 89 16 **LIGHT PINK W.EYE**



00 89 17 **ROSE**



00 89 18 **DEEP ROSE**



00 89 19 **PURPLE**



00 89 20 **WHITE**



00 89 02 **FLAME MIX**



00 89 06 **SALMON FLAME**



00 89 09 **LIGHT PURPLE**



00 89 03 **WINE**



00 89 08 **FUCHSIA**

SIERRA F1

Precoci a fiore grande

Large-flowered, early

Frühblühend, großblumig



HALIOS HD



CONTIGA



XL



LATINIA

MAXI



00 88 19 **MIX HALIOS HD**



HALIOS HD

Qualità anche ad alta densità. Fioritura più precoce di Halios

*Quality even at high density
Flowers earlier than Halios*

*Gute Qualität auch bei dichter Flächenbelegung
Frühere Blüte als Halios*



286	12-37
128	16-45
72	13-39
32	18-30

00 88 51 **FLAMMÈ
MELANGE MIX HD**



00 88 04 **ECARLATE VIF**



00 88 05 **ECARLATE SAUMON**



00 88 06 **SAUMON**



00 88 10 **FUCHSIA CLAIR**



00 88 11 **ROSE INDIEN**



00 88 14 **VIOLET CATTLEYA**



00 88 16 **BLANC PUR**



00 88 26 **BLANC**



00 88 22 **GRENADINE**



00 88 23 **ROSE SAUMONE**



00 88 24 **FUCHSIA NEON**



00 88 25 **MAGENTA FONCE'**

MAXI



286	12-37
128	16-45
72	13-39
32	18-30



00 88 03 **ECARLATE VIF**

HALIOS

**Serie di grande qualità
Ampia gamma di colori vivaci**

*High quality series
Wide range of vibrant colours*

Qualitativ hochwertige Serie
Breites Spektrum lebendiger Farben



00 88 01 **MELANGE**



00 88 02 **ROUGE ECARLATE**



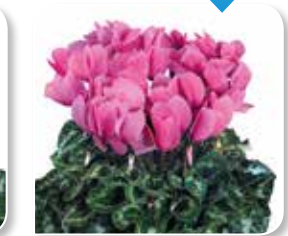
00 88 07 **ROSE SAUMONE**



00 88 08 **ROSE Á OEIL**



00 88 09 **FUCHSIA VIF**



00 88 20 **FUCHSIA CLAIR**



00 88 12 **VIOLET**



00 88 13 **VIOLET FONCE'**



00 88 15 **MAGENTA**



00 88 17 **BLANC PUR**



00 88 18 **BLANC Á OEIL**



00 88 50 **SAUMON FLAMMÈ**



00 88 52 **VIOLET FLAMMÈ**



00 88 53 **MAGENTA FLAMMÈ**



00 88 33 **FRANGE CANA
BLANC A' OEIL**



HALIOS HD



CONTIGA



XL



LATINIA

MAXI



00 88 65 PRUNE

286	12-37
128	16-45
72	13-39
32	18-30

HALIOS FANTASIA

Fiori decorativi e durevoli su piante rustiche

Decorative, long-lasting flowers on sturdy plants

Dekorative, lang haltbare Blüten auf widerstandsfähigen Pflanzen



00 88 66 MAGENTA DECORA



00 88 67 VIOLET FONCE' DECORA



00 88 64 MELANGE



00 88 60 ROUGE



00 88 61 FUCHSIA



00 88 62 VIOLET FONCE'



00 88 63 MAGENTA



00 88 90 VICTORIA 50 ROSE À OËL



00 88 91 SAUMON VICTORIA 50



00 88 92 VICTORIA 50

MAXI

Frangiati Fringed



CURLY



FRILLER

286	12-37
128	16-45
72	13-39
32	18-30

HALIOS CURLY



14-17

Fiori più grandi

Largest flowers

Gefranst, mit den
allergrößten
Blüten

00 88 39
MELANGE
PRECOCE



00 88 38 BLANC



00 88 36
MELANGE



00 88 40 ECARLATE



00 88 41 ROSE
SAUMONE FLAMMÉ



00 88 42 ROSE CLAIR
À OEIL ROUGE

00 88 49 FLAMMÉ MELANGE



00 88 43 FUCHSIA



00 88 44 FUCHSIA CLAIR
& FLAMMÉ



00 88 45 VIOLET LISERÉ



00 88 46 MAGENTA



00 88 47 VIOLET FONCE'



00 88 48 MAGENTA
LISERÉ



00 89 82 SCARLET

FRILLER

Compatto e precoce

Compact and early

Gefranst, kompakt, frühblühend



12-14

00 89 81
FLAME MIX



286	12-37
128	16-45
72	13-39



00 89 83 SALMON



00 89 84 PURPLE



00 89 85 WHITE



00 89 80 MIX



HALIOS



SIERRA



HALIOS HD



CONTIGA



XL

MAXI

CONTIGA (MAXORA)

Pianta forte, steli robusti

Strong plant, sturdy stems

**Robuste Pflanze
mit kräftigen Blütenstielen**



286	12-37
128	16-45
72	13-39
32	18-30



00 89 27 **RED**

MAXORA

- 00 89 24 **WINE RED**
- 00 89 25 **MIX**
- 00 89 30 **DEEP SALMON**
- 00 89 31 **PINK**
- 00 89 32 **NEON PINK**
- 00 89 33 **PINK FLAMED**
- 00 89 34 **DEEP PURPLE**
- 00 89 35 **LIGHT PURPLE**



00 89 23
PURPLE FLAMED



00 89 26 **LILAC FLAMED**



00 89 28 **WHITE**



00 89 29 **SALMON**

00 89 61 **FLAMED MIX**

00 89 60 **MIX**



00 89 62 **RED**



00 89 63 **DARK SALMON PINK**



00 89 64 **LIGHT W.EYE**



00 89 65 **NEON PINK IMP**

S.S. XL

Molto compatto, fiori robusti

Very compact, sturdy flowers

**Sehr kompakt,
kräftige Blüten**



00 89 66 **ORCHID**



00 89 67 **LIGHT VIOLET**



00 89 68 **DARK VIOLET**



00 89 69 **PURE WHITE**



00 89 70 **WHITE W.EYE**



00 89 71 **WINE RED**



00 89 72 **CREAM
WHITE**



00 89 73 **LIGHT
SALMON PINK**



00 89 74 **NEON
FLAMED IMP**



00 89 75 **VIOLET
FLAMED IMP**



00 89 76 **WINE RED
FLAMED IMP**



00 89 77 **FUJI RED**



MAXI



286	12-37
128	16-45
72	13-39



LATINIA

Compatto e precoce

Compact and early

Kompakt und frühblühend



00 90 01 **MELANGE FLAMMÈ MIX**

00 90 00 **MIX**
00 90 29 **MELANGE FRANGÈ**



00 90 04 **ROUGE ECARLATE**



00 90 06 **ROSE À OEIL VIOLET**



00 90 07 **ROSE À OEIL**

00 90 09 **FUCHSIA VIF**



00 90 10 **VIOLET FONCE'**



00 90 11 **CATTLEYA VIOLET**



00 90 13 **BLANC**



00 90 18 **VICTORIA 50**



00 90 12 **VICTORIA 50 ROSE À OEIL**



LATINIA FANTASIA

Fiori decorativi e durevoli su piante rustiche

Decorative, long-lasting flowers on robust plants

Dekorative, lang haltbare Blüten auf widerstandsfähigen Pflanzen

00 90 19 **FANTASIA MELANGE**



00 90 26 **MAGENTA FONCE'**



00 90 25 **FUCHSIA VIF**



00 90 20 **ROUGE**



00 90 22 **CATTLEYA**



00 90 24 **FUCHSIA**



00 90 21 **VIOLET FONCE'**





HALIOS HD



CONTIGA



XL



LATINA

MAXI



00 90 08 VIOLET

LATINA SUCCESS

Massima uniformità

Extremely uniform

Äußerst einheitliche Entwicklung



286	12-37
128	16-45
72	13-39
32	18-30



00 90 02 ROUGE VIF



00 90 14 SAUMON



00 90 15 FUCHSIA



00 90 16 MAGENTA FONCE'



00 90 17 BLANC PUR

MIDI Big



00 90 37 SAUMON FLAMMÉ

Premium

PREMIUM

**Chioma grande
Precoce**

*Large plant habit
Early*

*Üppiger Pflanzenaufbau
Frühblühend*



00 90 41 ROUGE VIF

00 90 44 MELANGE CLASSIQUE



00 90 35 MELANGE FLAMMÉ LISERÉ



00 90 38 SAUMON À OEIL



00 90 39 FUCHSIA FLAMMÉ



00 90 40 BLANC PUR COMPACT



00 90 42 BLANC COMPACT

MIDI



LASER



TIANIS



ALLURE



10,5-12

286	12-37
128	16-45
72	13-39



00 90 63 ROUGE ECARLATE

TIANIS

Grande resistenza alle intemperie

Very resistant to all types of weather

Äußerst witterungsbeständig bei allen Wetterbedingungen



00 90 88 SAUMON FONCE'



00 90 46 ROUGE VIF



00 90 47 SAUMON À OEIL



00 90 48 ROSE À OEIL LISÉRÉ



00 90 49 FUCHSIA



00 90 87 FUCHSIA VIF



00 90 50 BLANC EVOLUTION



00 90 51 BLANC PUR



00 90 60 VIOLET FONCE'



00 90 64 MAGENTA FONCE'

Tianis®



00 90 53 ROUGE ECARLATE



00 90 54 FUCHSIA VIF



00 90 55 VIOLET



00 90 56 VIOLET FONCE'



00 90 57 MAGENTA FONCE'



00 90 58 FUCHSIA

00 90 45 MELANGE FLAMMÉ

00 90 52 FANTASIA MELANGE

00 90 59 MELANGE

00 90 62 FUNFLAME





LASER



TIANIS



ALLURE

MIDI

S.S. ALLURE

**Compatto, uniforme,
programmabile**

*Compact, uniform,
programmable*

Kompakt, einheitlich,
steuerbar



286	12-37
128	16-45
72	13-39



00 89 79
FUJI MIX



00 89 90 MIX



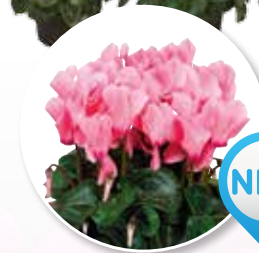
NEW

00 89 58 CREAM WHITE



NEW

00 89 59 WHITE WITH EYE



NEW

00 89 99 LIGHT SALMON PINK



00 89 78 LAVENDER



00 89 86 DARK SALMON PINK



00 89 87 LIGHT VIOLET



00 89 88 VIOLET FLAMED



00 89 89 NEON FLAMED



00 89 91 LIGHT NEON PINK



00 89 92 RED



00 89 93 DARK VIOLET



00 89 94 WINE RED IMP



00 89 95 PURE WHITE



00 89 96 NEON PINK



00 89 97 WINE RED FLAMED



00 89 98 SALMON FLAMED

MIDI



LASER



TIANIS



ALLURE

286	12-37
128	16-45
72	13-39



00 90 70 **PINK FLAME**



LASER SYNCHRO

Veloce e profumato

Fast-growing and fragrant

Schnellwüchsig und duftend



00 90 76 **MIX**



00 90 65 **SCARLET**



00 90 66 **WINE**



00 90 67 **WINE FLAME**



00 90 68 **SALMON**



00 90 69 **PINK**



00 90 71 **PURPLE**



00 90 72 **PURPLE FLAME**



00 90 73 **WHITE**



00 90 82 **ROSE FLAME**



00 90 77 **FLAMED MIX**



00 90 81 **ROSE**

LASER

Coltura veloce

Quick cultivation

Schnelle Kultur



00 90 78 **SALMON WITH EYE**

00 90 79 **SALMON FLAME**

00 90 84 **ORCHID**

00 90 85 **FUCHSIA**

00 90 86 **WHITE WITH EYE**



MINI WINTER



COMPACT



METIS



MIDORI

MINI



00 91 31 **PURPLE FLAME**



00 91 27 **PINK**



00 91 22 **BRIGHT SCARLET**



00 91 28 **PURPLE**

MIDORI SYNCHRO

Fioritura contemporanea

Simultaneous flowering

Gleichzeitige Blüte



286	12-37
180	16-39
64	13-40



00 91 20 **MIX**



00 91 32 **WINE FLAME IMP**



00 91 29 **WHITE**



00 91 24 **SALMON**



00 91 25 **ROSE FLAME SHADES**



00 91 30 **WHITE WITH EYE**

MIDORI

Compatto e omogeneo

Compact and uniform

Kompakt und uniform



MINI



CARINO



SEE WHY



SMARTIZ



VERANO

286	12-37
180	16-39
64	13-40




00 91 03 MIX IMP

SEE WHY

Compatto e precoce
Compact and early

Kompakt und frühzeitig





00 91 06 SALMON



00 91 07 DEEP ROSE



00 91 04 BRIGHT SCARLET



00 91 05 PURPLE



00 91 08 FUCHSIA



00 91 09 WHITE COMPACT



00 91 96 WINE



00 91 97 PURPLE

SNOWRIDGE MINI

Varietà a fiori bordati più compatta

Most compact variety with white-edged flowers

Kompaktere Sorte mit weiß gesäumten Blüten





CARINO



SEE WHY



SMARTIZ



VERANO

MINI



SMARTIZ

Mini per alta densità

Mini suitable for high density

Minisorte für hohe Flächenbelegung



286	12-37
180	16-39
64	13-40



00 93 00 MELANGE CLASSIQUE

Smartiz
Smart & Easy



00 93 01 ROUGE VIF



00 93 02 FUCHSIA



00 93 03 FUCHSIA VIF



00 93 04 VIOLET



00 93 05 VIOLET FONCÉ



00 93 06 MAGENTA FONCÉ



00 93 07 BLANC PUR



00 93 20 VICTORIA



00 93 21 MAGENTA



00 93 22 VIOLET FONCÉ



00 93 23 ROUGE



00 93 24 FUCHSIA



00 93 25 MELANGE FANTASIA

MINI



MINI WINTER



COMPACT



METIS

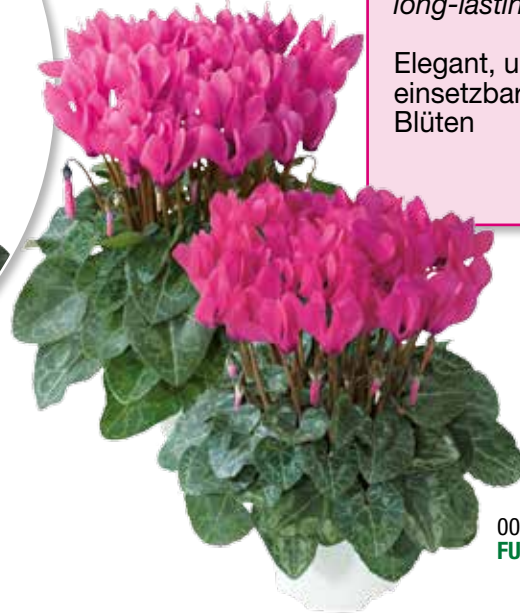


MIDORI

286	12-37
180	16-39
64	13-40



00 91 61 **ROUGE VIF COMPACT**



00 91 60 **FUCHSIA & FUCHSIA VIF**

METIS

Elegante, universale, fiori durevoli

Elegant, universal, long-lasting flowers

Elegant, universell einsetzbar, haltbare Blüten



00 91 43 **SAUMON ECARLATE COMPACT**



00 91 44 **ROSE DE PERSE**



00 91 45 **FUCHSIA VIF**



00 91 46 **BLANC PUR**

00 91 40 **MIX**

00 91 41 **SUMMER MIX**

00 91 42 **MELANGE FLAMMÈ**



00 91 47 **ROSE SAUMONE'**



00 91 48 **ROUGE ECARL. DECORA**



00 91 50 **VIOLET FONCE' EVOLUTIONS**



00 91 52 **VIOLET**



00 91 53 **MAGENTA FONCE'**



00 91 55 **ECARLATE COMPACT**



00 91 56 **BLANC À OEIL**



00 91 57 **LILAS CLAIR À OEIL**



00 91 58 **ROSE CLAIR À OEIL**



00 91 59 **BLANC PUR EVOLUTION**



CARINO



SEE WHY



SMARTIZ



VERANO

MINI



00 91 68 FUCHSIA VIF

METIS Decora

286	12-37
180	16-39
64	13-40



00 91 73 MELANGE



00 91 69 BLANC PUR



00 91 70 SAUMON



00 91 71 VIOLET



00 91 72 MAGENTA



00 91 74 ROSE DE PERSE

00 91 75 ROUGE

Fantasia



00 91 76 ROUGE & FUCHSIA VIF



00 91 79 SAUMON ECARLATE



00 91 78 MAGENTA FONCE'



00 91 77 VIOLET FONCE'



Victoria



00 91 80 DECO MIX EVOLUTION



00 91 82 SAUMON & FUCHSIA



00 91 81 VICTORIA



MINI



MINI WINTER



COMPACT



METIS



MIDORI

286	12-37
180	16-39
64	13-40



00 92 45 MIX

S.S. MINI WINTER

Per colture autunnali

For autumn cultivation

Ideal für die Herbstkultur



00 92 46 FLAMED MIX



00 92 47 RED



00 92 48 WINE RED



00 92 49 FLAMED WINE RED



00 92 51 LIGHT SALMON PINK



00 92 52 SALMON FLAMED



00 92 53 NEON PINK



00 92 54 NEON FLAMED



00 92 55 LIGHT NEON PINK



00 92 56 LIGHT VIOLET IMP



00 92 57 DARK VIOLET



00 92 58 ORCHID



00 92 59 DEEP DARK VIOLET



00 92 60 PURE WHITE



00 92 61 WHITE WITH EYE



CARINO



SEE WHY



SMARTIZ



VERANO

MINI

S.S. MINI WINTER

286	12-37
180	16-39
64	13-40



NEW

00 92 50 **CREAM WHITE**



NEW

00 92 62 **SALMON WITH EYE IMP**



NEW

00 93 31 **DEEP NEON PINK**



NEW

00 93 32 **VIOLET FLAMED IMP**



NEW

00 93 33 **FUJI DARK VIOLET**



NEW

00 93 34 **FUJI WINE RED**



S.S. PICASSO

S.S. Mini Winter a foglie argentate

S.S. Mini Winter, silver-leaved

S.S. Mini Winter mit silberfarbenen Blättern



NEW

00 92 89 **RED**



NEW

00 92 91 **WINE RED**



00 92 95 **MIX**



NEW

00 92 92 **NEON PINK**



NEW

00 92 93 **DARK VIOLET IMP**



NEW

00 92 94 **CREAM WHITE**



NEW

00 92 96 **FLAMED MIX**



NEW

00 92 97 **LIGHT WITH EYE**

MINI



MINI WINTER



COMPACT



METIS



CARINO

286	12-37
180	16-39
64	13-40



S.S. CARINO

Intermedio tra Mini Winter e Verano

Intermediate size between Mini Winter and Verano

Zwischengröße zwischen Mini Winter und Verano



00 92 63 MIX



00 92 64 RED



00 92 66 SALMON W.EYE



00 92 67 NEON PINK



00 92 68 DARK VIOLET



00 92 69 DEEP NEON FLAMED



00 92 70 WINE RED FLAMED



00 92 72 PURE WHITE



00 92 77 CREAM WHITE



00 92 81 LIGHT SALMON PINK



00 92 82 DEEP WINE RED IMP



00 92 83 DARK SALMON PINK



00 92 84 SALMON FLAMED



00 92 85 PINK WITH EYE



00 92 86 LIGHT NEON FLAMED



00 92 87 DEEP DARK VIOLET



00 92 99 WINE RED



00 92 71 FUJI DARK VIOLET



00 92 88 FUJI NEON PINK



00 92 98 FUJI WINE RED



00 92 76 FUJI WINE RED





MIDORI



SEE WHY



SMARTIZ



VERANO

MINI



00 92 00 MIX

S.S. VERANO

Precoce e compatto
Early and compact
Frühblühend und kompakt



00 92 19 FUJI SALMON

286	12-37
180	16-39
64	13-40



00 92 01 FLAMED MIX



00 92 18 FUJI NEON PINK



00 92 17 FUJI WINE RED



00 92 02 RED SOLAR



00 92 03 WINE RED



00 92 04 SALMON RED



00 92 05 SALMON FLAMED



00 92 06 LIGHT SALMON PINK



00 92 43 DEEP NEON FLAMED SOLAR



00 92 07 DARK SALMON PINK IMP



00 92 08 NEON PINK



00 92 09 LIGHT W.EYE IMP



00 92 10 NEON FLAMED



00 92 11 LIGHT VIOLET IMP



00 92 12 DARK VIOLET IMP



00 92 13 DEEP DARK VIOLET



00 92 14 PURE WHITE SOLAR



00 92 15 DEEP WINE RED



00 92 16 WINE RED FLAMED

MINI



MINI WINTER



COMPACT



METIS



MIDORI

286	12-37
180	16-39
64	13-40



00 92 20 MIX



00 92 21 FLAMED MIX

S.S. COMPACT

**Compatto con molte foglie
Fioritura abbondante, tardivo**

*Compact with many leaves
Profuse flowering, late*

**Kompakt mit viel Laub
Reichblühend, spätblühend**



00 92 22 RED



00 92 23 WINE RED



00 92 24 WINE RED
W.EDGE



00 92 25 SALMON RED



00 92 26 WINE RED
FLAMED



00 92 27 DARK SALMON
PINK IMP



00 92 28 SALMON W.EYE
IMP



00 92 29 NEON PINK IMP



00 92 30 LIGHT W.EYE



00 92 31 NEON FLAMED



00 92 32 LIGHT NEON
PINK



00 92 33 PINK W.EYE



00 92 34 DARK VIOLET



00 92 35 LIGHT VIOLET



00 92 36 ORCHID



CARINO



SEE WHY



SMARTIZ



VERANO

MINI



00 92 37 **SPOTTED**



00 92 38 **VIOLET FLAMED**



00 92 39 **DARK VIOLET W.EDGE**

S.S. COMPACT

286	12-37
180	16-39
64	13-40



00 92 40 **PURE WHITE**



00 92 41 **WHITE WITH EYE**



00 92 42 **FUJI MIX**



00 92 90 **MIX**

S.S. DA VINCI

S.S. Compact a foglie argentate

S.S. Compact, silver-leaved

S.S. Compact mit Silberblatt

S.S. MICRO

00 92 80 **MIX IMP**

